

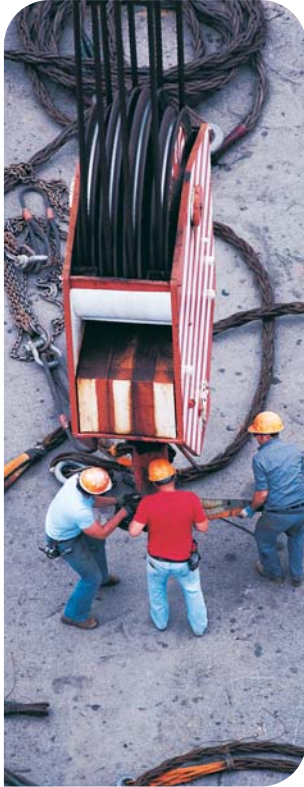


**ADULT COURSES
SAFE USE OF EQUIPMENT**



**SOUTHAMPTON
ENGINEERING
TRAINING
ASSOCIATION**

ADULT COURSES SAFE USE OF EQUIPMENT



Slings and Mechanical Lifting Techniques

The course is designed to instruct delegates in the safe use of cranes, hoists and lifting equipment with the necessary background, theory and practice.

The standard course is of one day's duration, although tailored courses can be provided to suit the requirements of individual employers.

This course is ideally suited to presentation on-site using the customers' own facilities and structured to meet the company's particular needs.

Tower Scaffold: Erecting and using work platforms and ladders and working at heights

This course covers the training necessary to develop competence in safely and correctly erecting and dismantling system scaffold to a height of four metres, erecting and using ladders safely to include the following:

- Health and safety in the work place;
- Current health and safety legislation;
- Specific safety requirements, use of equipment and working methods.

Erecting and dismantling System Scaffold (work platforms) to include fixed and mobile towers.

Working from platforms to include:

- Maximum loading;
- Safe methods of access;
- Prevention of unauthorised access;
- Safe positioning of platforms.

Courses are delivered on customer sites and can be tailored to specific requirements.



Mobile Elevated Work Platforms (MEWPS) (cherry picker)

This course is designed to instruct delegates in the safe use of mobile work platforms. The standard course runs for one day, ideally on your site, but it is usually helpful to tailor duration and content to suit your own requirements. Please contact us for more details.

Fork Truck Driver Training (telehandler, sideloader, HIAB etc)

Recognised by the Association of Industry Truck Trainers Independent Training Standards Scheme and Register (AITT – IT SSAR).

The course primarily is of a practical nature, focusing on the safety aspects of safe fork truck driving, although there is an element of theory that must be completed.

The course length will vary dependant on the trainee experience and ability (*see right hand column*). This course takes place on your site using your own equipment.



Three day course

(For the driver with a little experience)

- Safe operating practice;
- Correct operating procedures;
- Competence testing.

Five day course

(For the driver with little or no experience)

- Safe operating procedure;
- Elementary driving;
- Correct operating procedures;
- Intensive practice;
- Competence testing.

Competence testing only

(Approximately one hour per delegate)

This course is presented on-site using the customer's own facilities and structured to meet the company's particular needs.

Please note: All employers must ensure their Fork Lift Truck drivers are trained in line with Approved Code of Practice ACOP L117 in order to fulfil their HSWA S2 and PU WER R9 responsibilities. New drivers should undertake the five day course.



First Avenue, Millbrook
Southampton, Hampshire SO15 0LJ
Telephone: 023 8077 1908
Facsimile: 023 8087 8317
Email: info@seta-training.co.uk
Web: www.seta-training.co.uk

